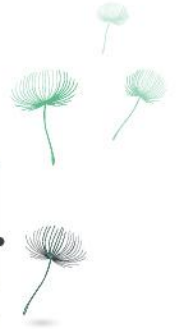


TERA
SENSOR



NextPM Lite Data Sheet

NEXT GENERATION PARTICULATE MATTER OEM
SENSOR PM 10, PM 2.5, PM 1



Advantages

Tera Sensor's accuracy

Durability

The Smallest



Technical specifications

| Designation | Values | Units |
|--|----------------------|---|
| GENERAL | | |
| <i>Technology</i> | <i>Optical</i> | - |
| <i>Targeted pollutants</i> | Particulate Matter | - |
| <i>Outputs</i> | PM1 PM2.5 PM10 | $\mu\text{g}/\text{m}^3$ & pcs / L |
| <i>Airflow</i> | <i>TBD</i> | <i>L/mn</i> |
| <i>Size</i> | <i>Annex 1</i> | <i>mm / Inches</i> |
| <i>Lifetime</i> | <i>>10 000</i> | <i>hour</i> |
| PERFORMANCE | | |
| <i>Particle Size detection range</i> | <i>0,3 - 10</i> | μm diameter |
| <i>Detection efficiency with 0.3 μm diameter particles</i> | <i>> 50</i> | % |
| <i>Concentration detection range / PM₁₀ - PM_{2.5} - PM₁</i> | <i>0 - 1000</i> | $\mu\text{g}/\text{m}^3$ (Arizona dust A1 equivalent) |
| <i>Detection Limit</i> | <i><1</i> | $\mu\text{g}/\text{m}^3$ (Arizona dust A1 equivalent) |
| <i>Linearity error</i> | <i><5</i> | % |
| <i>Repeatability error</i> | <i><3</i> | % |
| <i>Refresh rate</i> | <i>1</i> | sec. |
| <i>Warm-up time</i> | <i>10</i> | sec. |
| <i>Temperature influence</i> | <i><0.01</i> | $\mu\text{g}/\text{m}^3/^\circ\text{C}$ |



| Designation | Values | Units |
|---------------------------------|---|---------------|
| ELECTRIC SPECIFICATIONS | | |
| Power supply | 5.0 | VDC |
| Power consumption in operation | <50 | mA |
| Power consumption in Sleep Mode | <1 | mA |
| COMMUNICATION | | |
| UART or I2C | PM1 / PM2.5 / PM10 | µg/m3 & pcs/L |
| OTHER | | |
| Operating conditions | 0 to +50 | °C |
| | 0 - 70 uncondensed | % |
| | 500 à 1500 | hPa |
| Storage conditions | -20 à +60 | °C |
| | 0 - 95 uncondensed | % |
| | 500 à 1500 | hPa |
| Certifications | CE | |
| | UL | |
| | RoHS compliant | |
| Dimensions and weight | L 33,5 mm x 32,6 mm x H 20,5 mm >25 g L 1,32 / W 1,28 / H 0,8 inches 0,88 Oz | |



Mechanical Specifications

